

CTR2 - Additional Photos

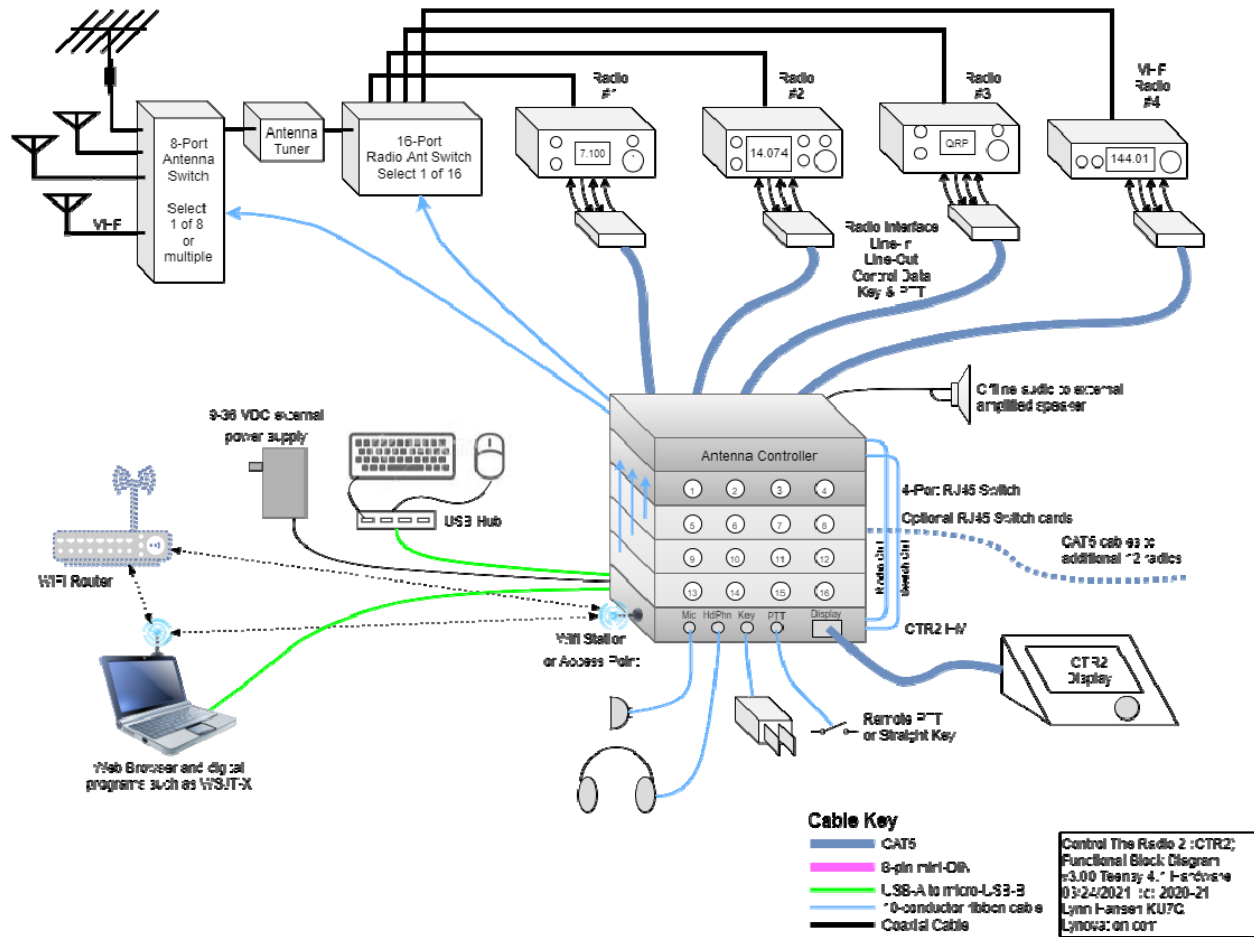


Figure A – Functional diagram of CTR2.

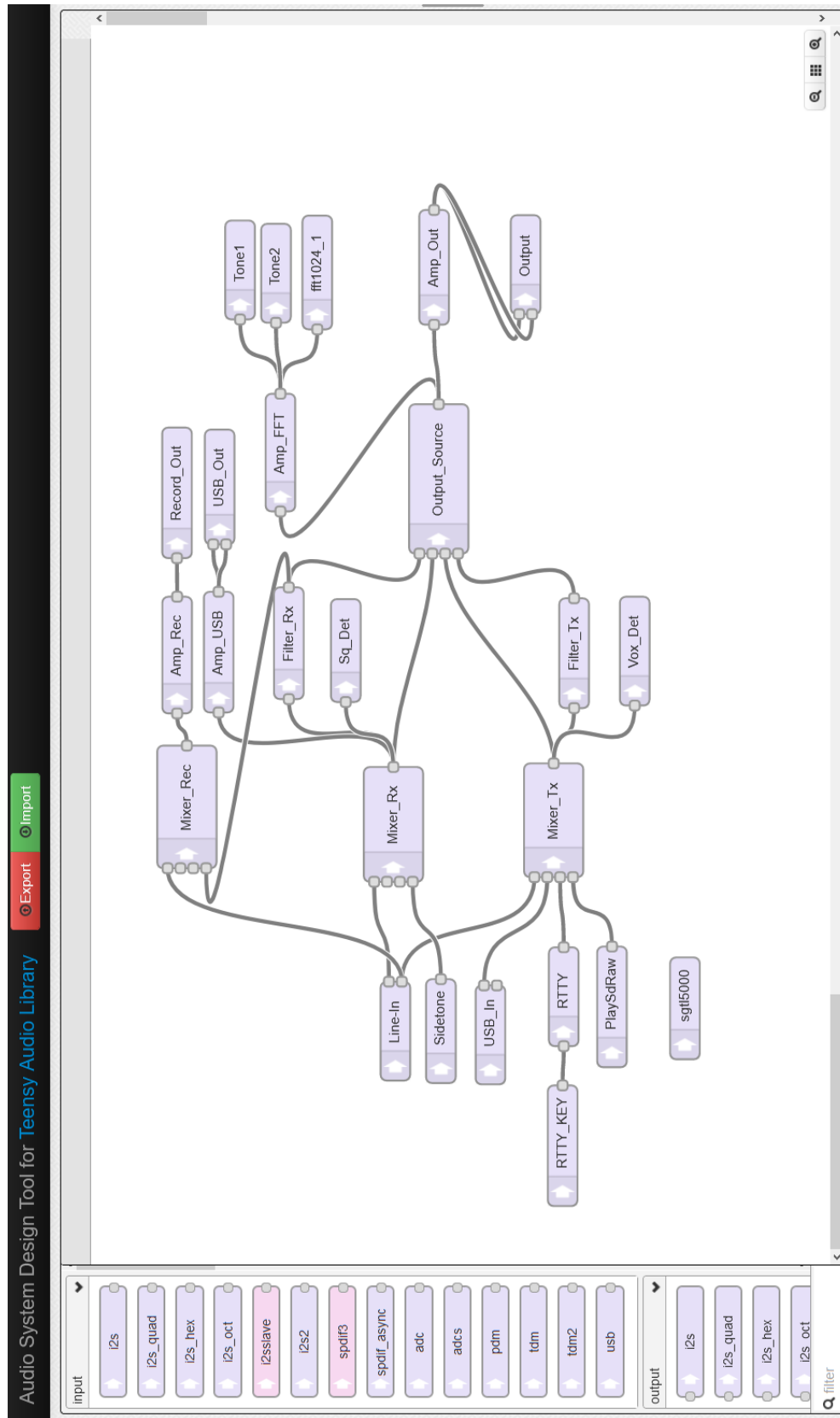
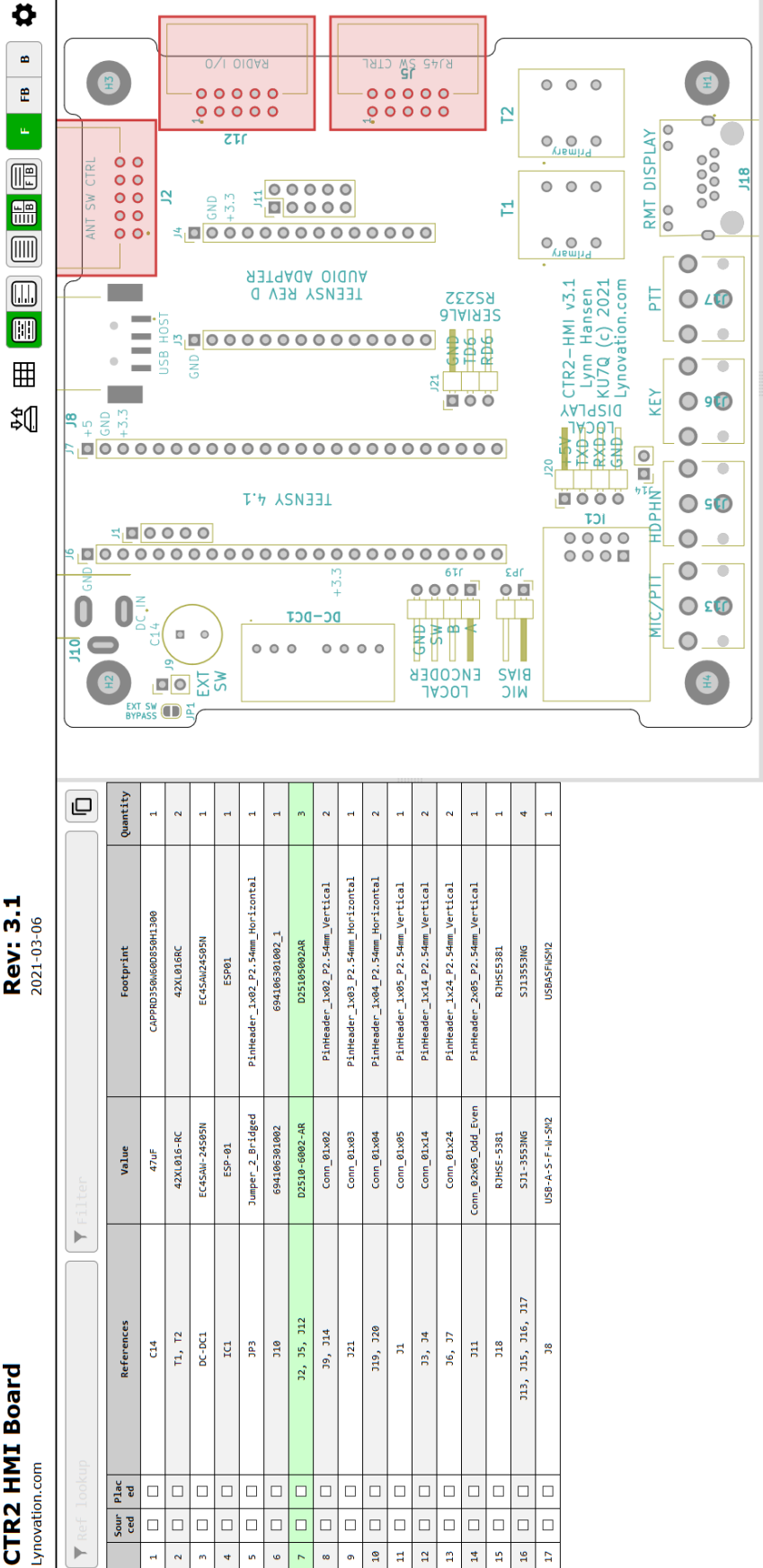
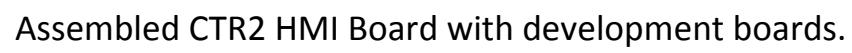
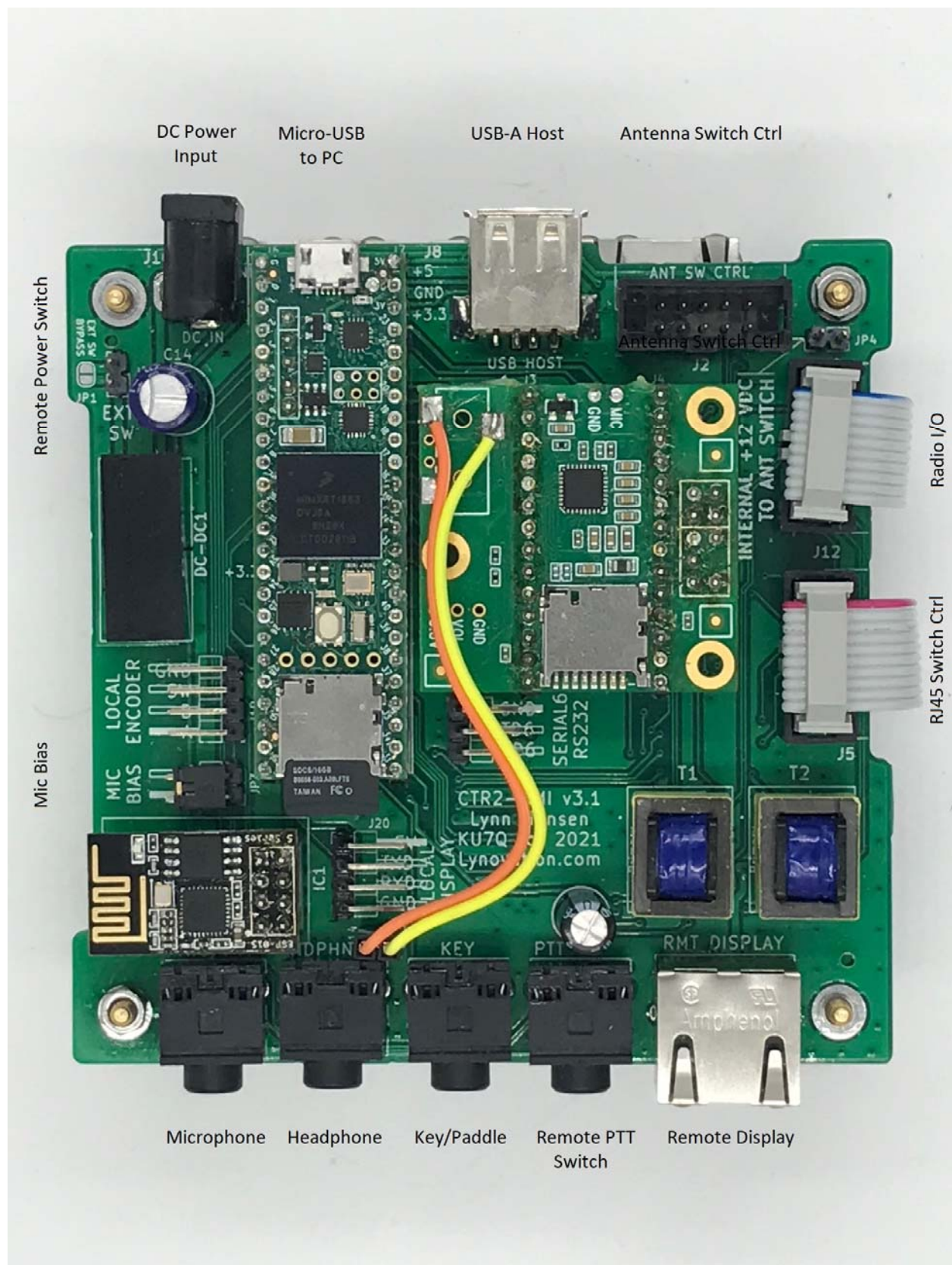


Figure B - CTR2 audio interface as designed on the PJRC audio design tool.

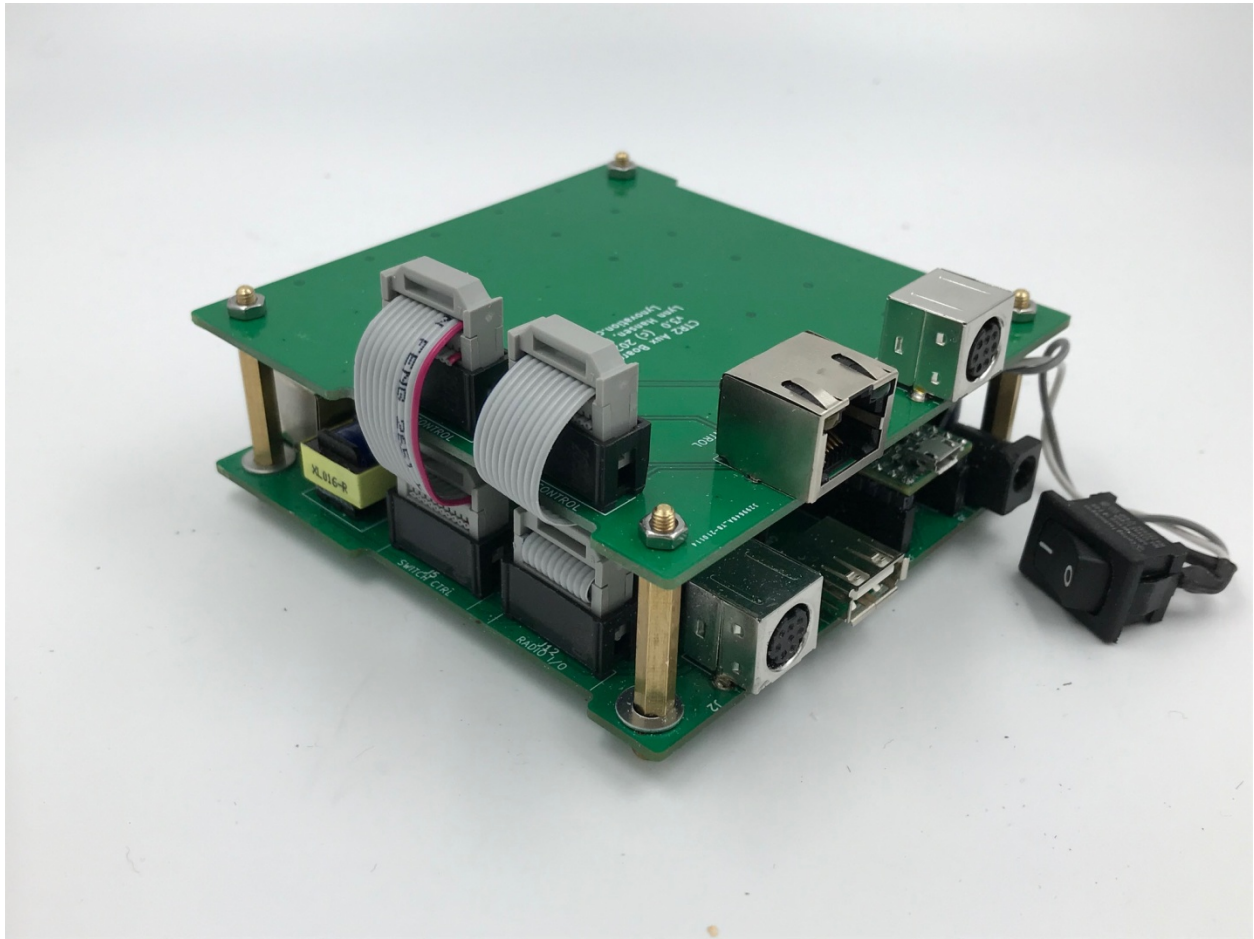




Assembled CTR2 HMI Board with development boards.



Assembled CTR2 HMI board with development boards installed



CTR2 HMI board with Auxiliary board installed

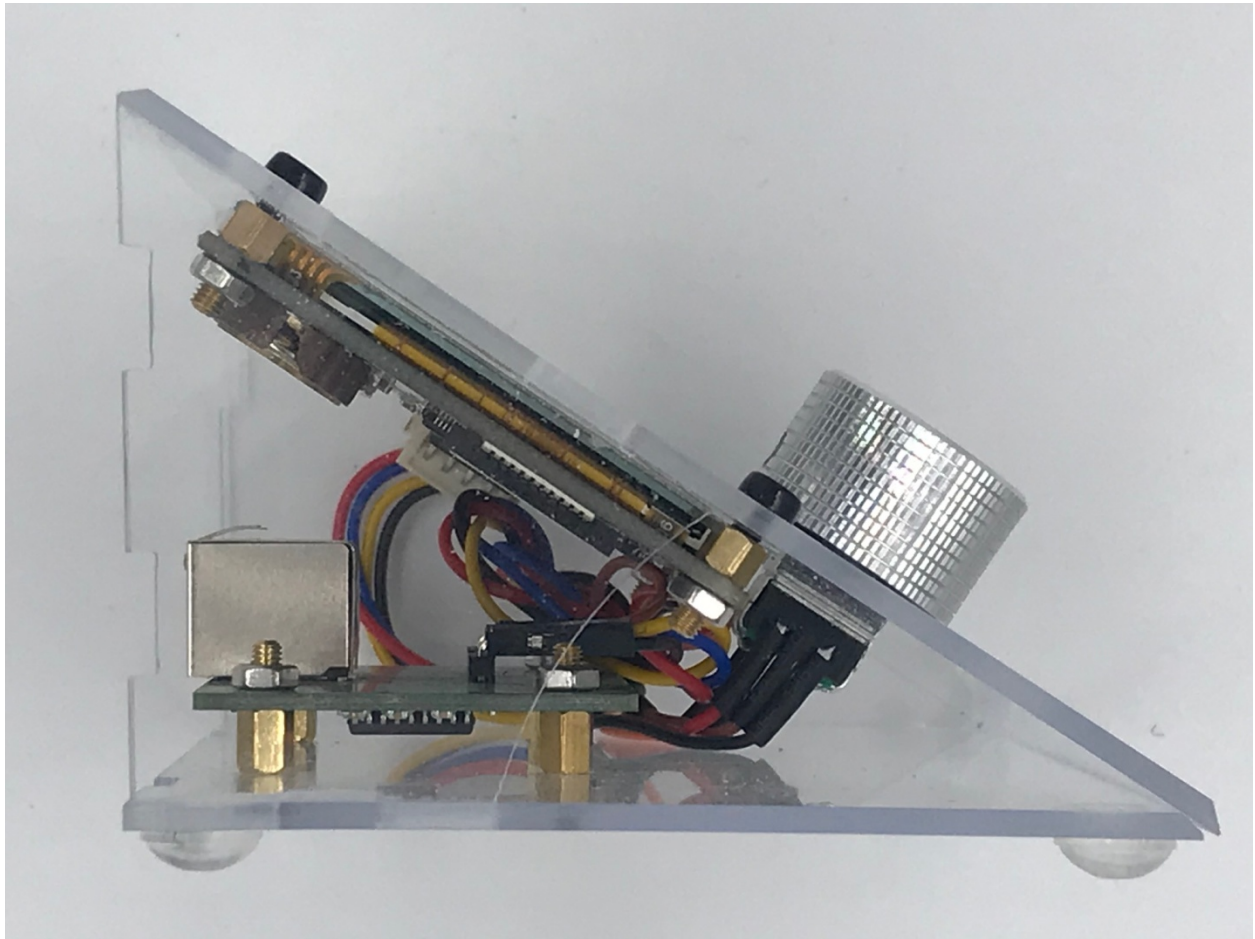
NOTE: Version 3.x boards do not use the 8-pin mini-DIN connectors.



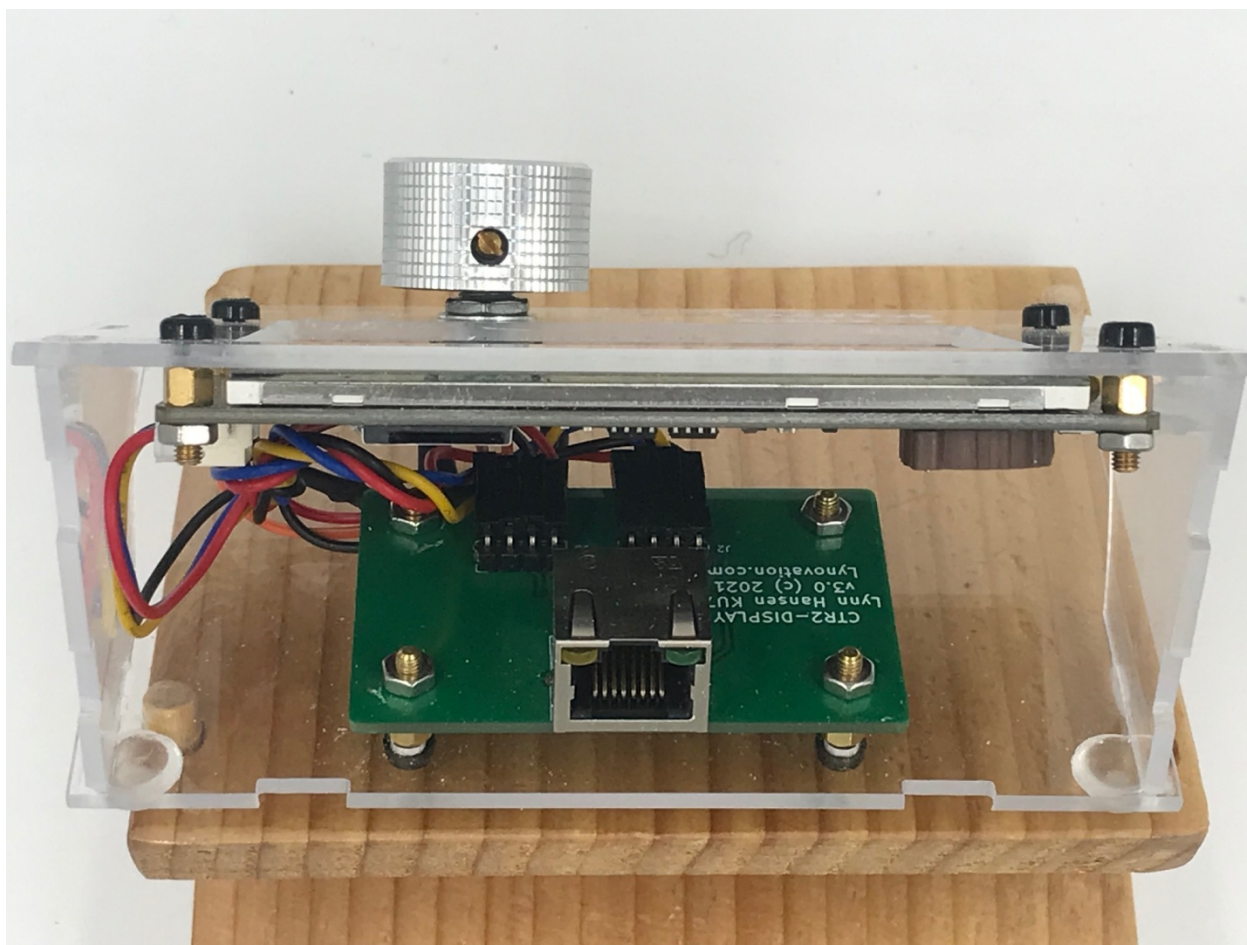
CTR2 HMI with Display, Auxiliary board, and one Radio I/O module.



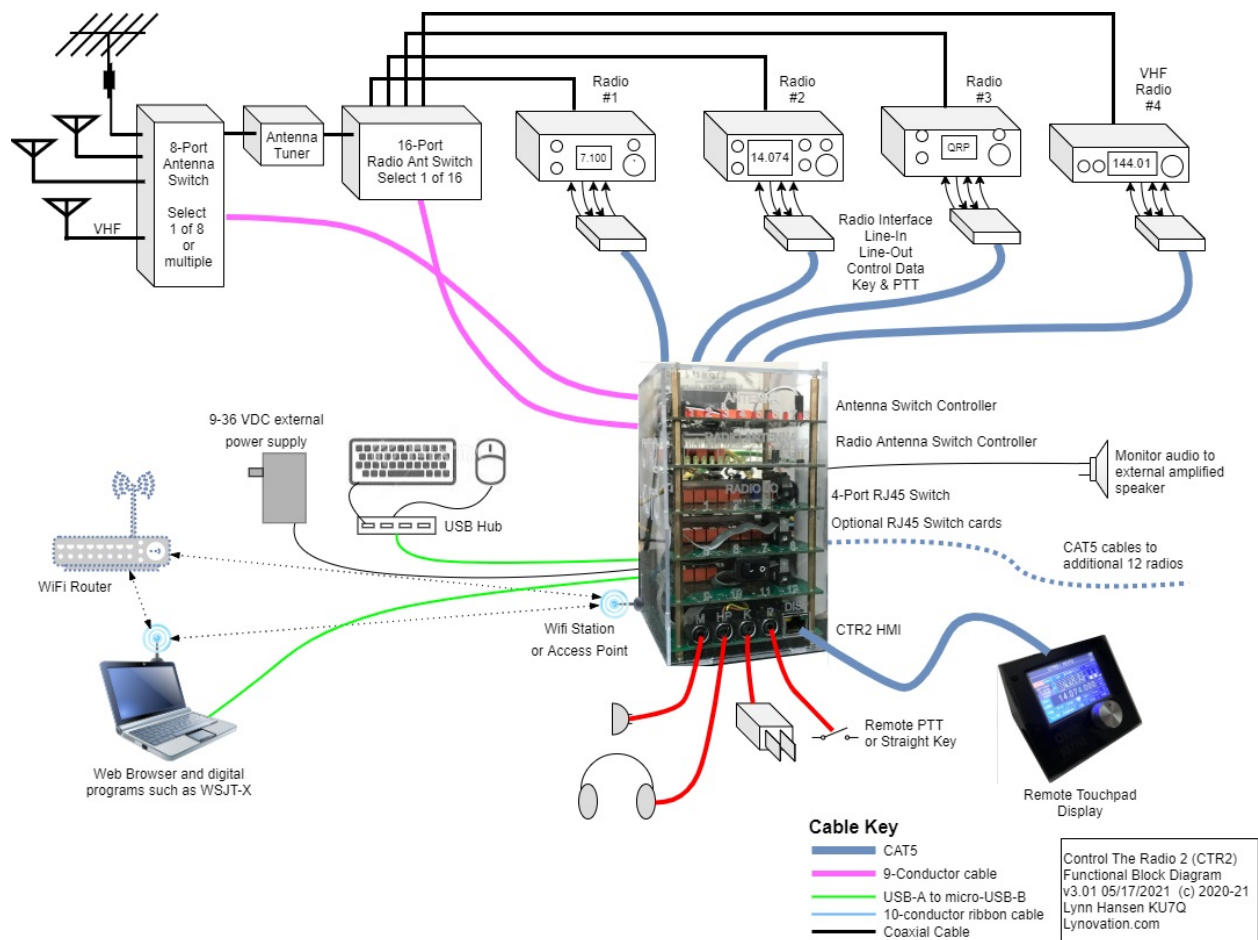
CTR2 HMI with Auxiliary board, display, manual RJ45 switch, and two Radio I/O modules.



CTR2 Display Enclosure with Display Driver board, encoder, and Nextion Display.



CTR2 Display Driver Board Close-up.



CTR2 System Functional Block Diagram – another rendering.