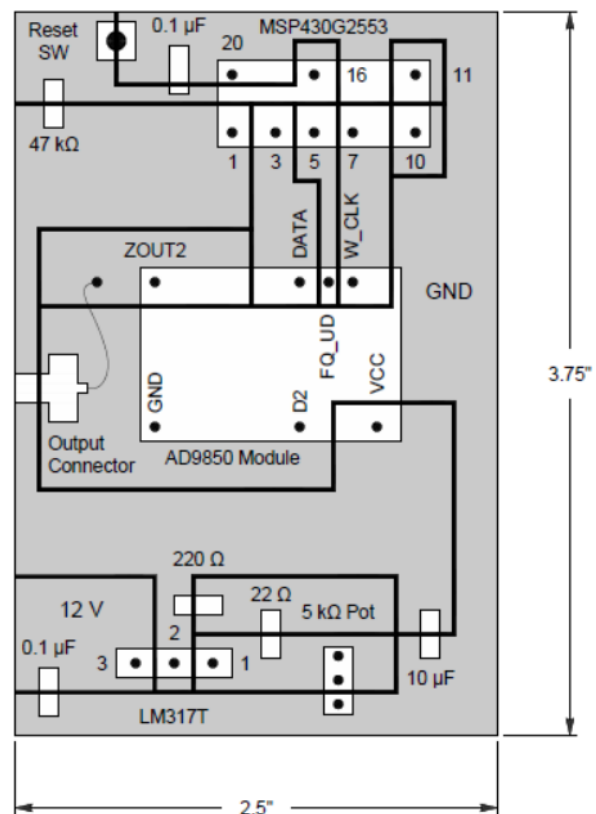


"Programming the DDS AD9850 Signal Generator Module with the Texas Instruments MSP430 Launchpad"

James L. Kretzschmar, AE7AX

ae7ax@inbox.com or jlkwy@bresnan.net

Board Layout and Parts Placement Diagram, Fixed Frequency Signal Generator Board layout and part placement. The board is made with a rotary instrument and a cutting disk. Because of the fibers in the board material it is best to do the cutting outside with a mask on and safety glasses. The parts are mounted on the copper side of the board and the enlarged drawing shows the placement. As mentioned in the article, the unused pins on the 20 pin IC socket and the female receptacles for the AD9850 module were pulled out.



QX1709-KretzschmarA