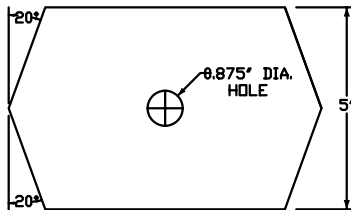
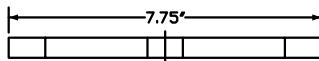
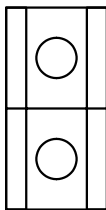
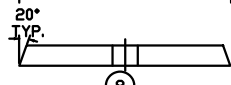
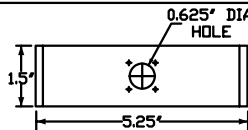


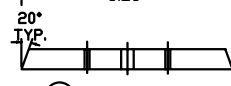
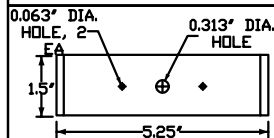
HUB ASSEMBLY
MATERIAL: 1/2" POPLAR
REQ'D: 1 EACH



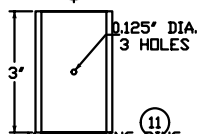
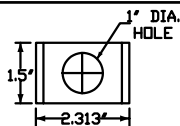
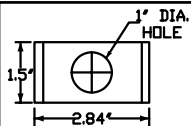
HUB TOP/BOTTOM
MATERIAL: 1/2" POPLAR
REQ'D: 2 EACH



HUB BACK
MATERIAL: 1/2" POPLAR
REQ'D: 1 EACH



HUB FRONT
MATERIAL: 1/2" POPLAR
REQ'D: 1 EACH



MAST GUYING RING
MATERIAL: 1.5" PVC
COUPLING
REQ'D: 1 EACH

HUB SIDE
MATERIAL: 1/2" POPLAR
REQ'D: 4 EACH

HUB SIDE DOUBLER
MATERIAL: 1/2" POPLAR
REQ'D: 4 EACH

DESIGN: A.W. BAKER 09/23/02

TESTED: A.W. BAKER 09/28/02

KG4JJH



BLACK WIDOW
PORTABLE 15 METER BEAM
HUB DETAILS

SCALE: 1/2"1

SHEET 3 OF 4

REV. 0

NOTE: CIRCLED NUMBERS REFER TO BILL OF MATERIAL
ITEMS